

cuvelo

Moscow Road,
Bayswater, W2



A beautifully refurbished one bedroom apartment.
Close to the large open spaces of Hyde Park as well as all the fantastic amenities
that Notting Hill and Bayswater have to offer. Closest tube stations: Bayswater and Queensway

· Reception room with open plan kitchen · Bedroom with integrated wardrobe · Bathroom ·

Price: £699,000

Lease length: 141 years

Service Charge: £2,000 annually

Porter: live-in

Please note: photos were taken from before previous tenancy

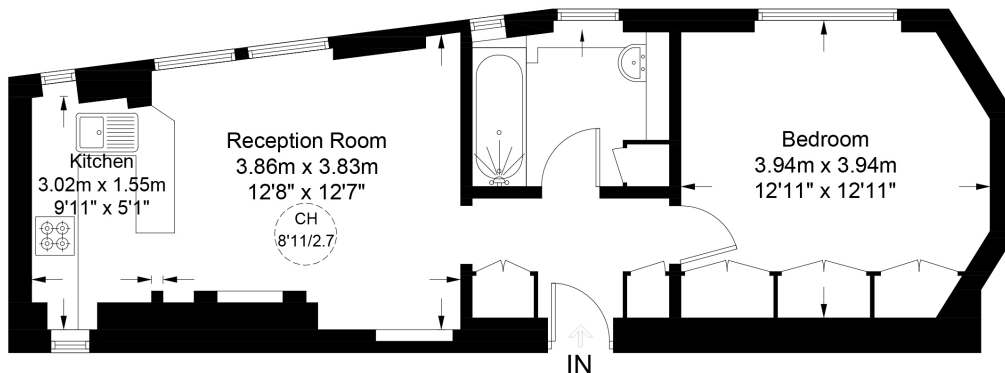
T +44 (0)20 7341 4387 | [cuvelo.com](https://www.cuvelo.com)

Cuvelo Limited is a limited liability company registered in England and Wales with registered number 11424779.
The office is at 109 Gloucester Road, South Kensington, London SW7 4SS.



Windsor Court, W2

Approximate Gross Internal Area = 476 sq ft / 44.2 sq m



Third Floor



This plan is for layout guidance only. Not drawn to scale unless stated. Windows and door openings are approximate. Whilst every care is taken in the preparation of this plan, please check all dimensions, shapes and compass bearings before making any decisions reliant upon them. (ID983718)

Score	Energy rating	Current	Potential
92+	A		
81-91	B		
69-80	C	72 C	77 C
55-68	D		
39-54	E		
21-38	F		
1-20	G		

The graph shows this property's current and potential energy rating.

Important information

Our property particulars do not represent an offer or contract, or part of one. The information given is without responsibility on the part of the agents, seller(s) or lessor(s) and you should not rely on the information as being factually accurate about the property, its condition or its value. Neither Cuvelo LTD, nor anyone in its employment or acting on its behalf has authority to make any representation or warranty in relation to this property. We have not carried out a detailed survey, nor tested the services, appliances or fittings at the property. The images shown may only represent part of the property and are as they appeared at the time of being photographed. The areas, measurements and distances are approximate only. Any reference to alterations or use does not mean that any necessary planning permission, building regulation or other consent has been obtained. The VAT position relating to the property may change without notice..